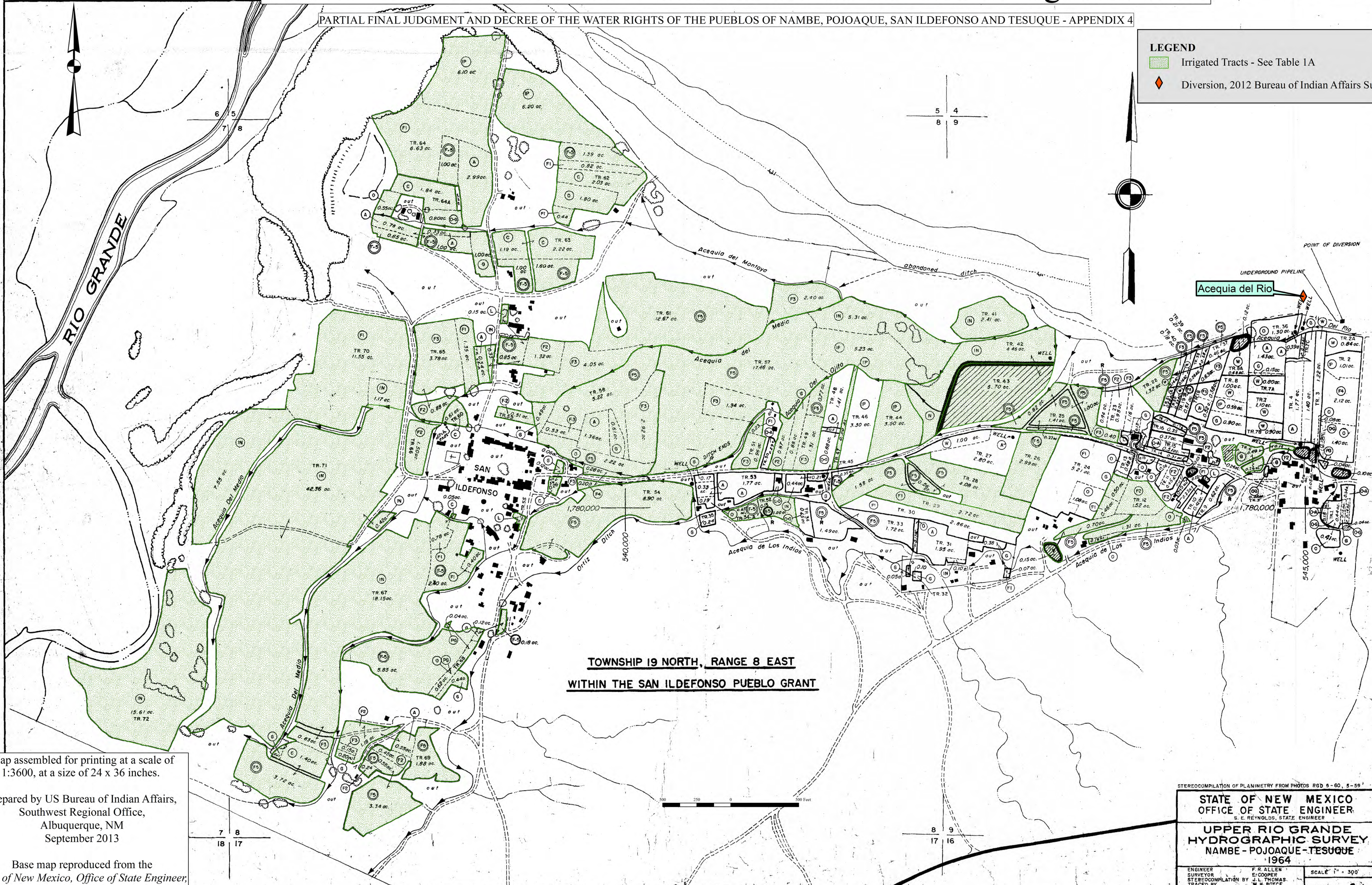


# APPENDIX 4 - FIGURE 2 - Pueblo de San Ildefonso Irrigated Lands

PARTIAL FINAL JUDGMENT AND DECREE OF THE WATER RIGHTS OF THE PUEBLOS OF NAMBE, POJOAQUE, SAN ILDEFONSO AND TESUQUE - APPENDIX 4

**LEGEND**

- Irrigated Tracts - See Table 1A
- Diversion, 2012 Bureau of Indian Affairs Survey



**TOWNSHIP 19 NORTH, RANGE 8 EAST  
WITHIN THE SAN ILDEFONSO PUEBLO GRANT**

Map assembled for printing at a scale of 1:3600, at a size of 24 x 36 inches.  
Prepared by US Bureau of Indian Affairs,  
Southwest Regional Office,  
Albuquerque, NM  
September 2013

Base map reproduced from the  
State of New Mexico, Office of State Engineer,  
Upper Rio Grande Hydrographic Survey,  
Nambé - Pojoaque - Tesuque, 1964.

STEREOCOPIATION OF PLANIMETRY FROM PHOTOS RGD 5-60, 5-59

**STATE OF NEW MEXICO  
OFFICE OF STATE ENGINEER**  
S. E. REYNOLDS, STATE ENGINEER

**UPPER RIO GRANDE  
HYDROGRAPHIC SURVEY  
NAMBE - POJOAQUE - TESUQUE  
1964**

ENGINEER SURVEYOR STEREOCOPIATION BY APPROVED	F. R. ALLEN E. COOPER J. L. THOMAS M. H. BOYCE	SCALE 1" = 300' SHEET NO. <b>2</b>
--	---	---------------------------------------